

SIGN MODULE LINEA 8X

PRODUCT FEATURES

- **Warranty – 5 Years**
- Narrow beam, no SMD Technology
- High efficiency LED
- Constant current design
- High colour consistency (MacAdam 4)
- Anti glare diamond lens
- Beam angle: 18°x25°
- Protection class IP 66
- Normal lifetime up to 50,000 h
- Flexible chain, can be split between any module
- Mounting with screw or premounted double sided adhesive tape possible
- Fully integrated heat sink
- Has rigid cover for higher safety & aluminum PCB for better heat dissipation

AREAS OF APPLICATION

- Signage
- Illuminated advertising
- Light boxes (best for 40mm - 150mm deep boxes)
- Tolerance range for optical and electrical data: -15/±10%
- All value @ ta: 25°C
- Tolerance range for the supply voltage: 12V±5%

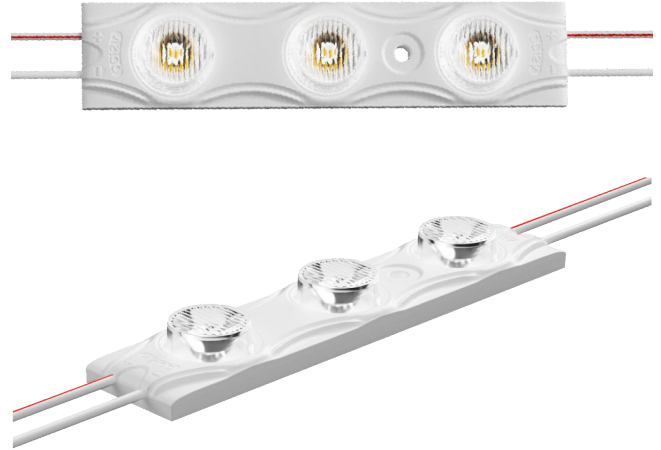


PHOTO-METRICAL DATA

Colour temperature	7100K, 6500K, 4000K, 3000K
Luminous flux per module chain	9000 lm
Luminous flux per LED module	300 lm
Luminous efficacy	100 lm/W

TECHNICAL DATA

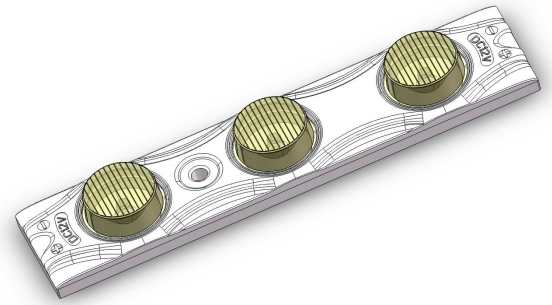
Product name	Linea 8x
Module size	115 x 25 x 12.2 mm
Distance of module (wire)	175 mm
Ambient temperature ta	-25° ±60°C
Max temperature on modules tc	75°C

ELECTRICAL DATA

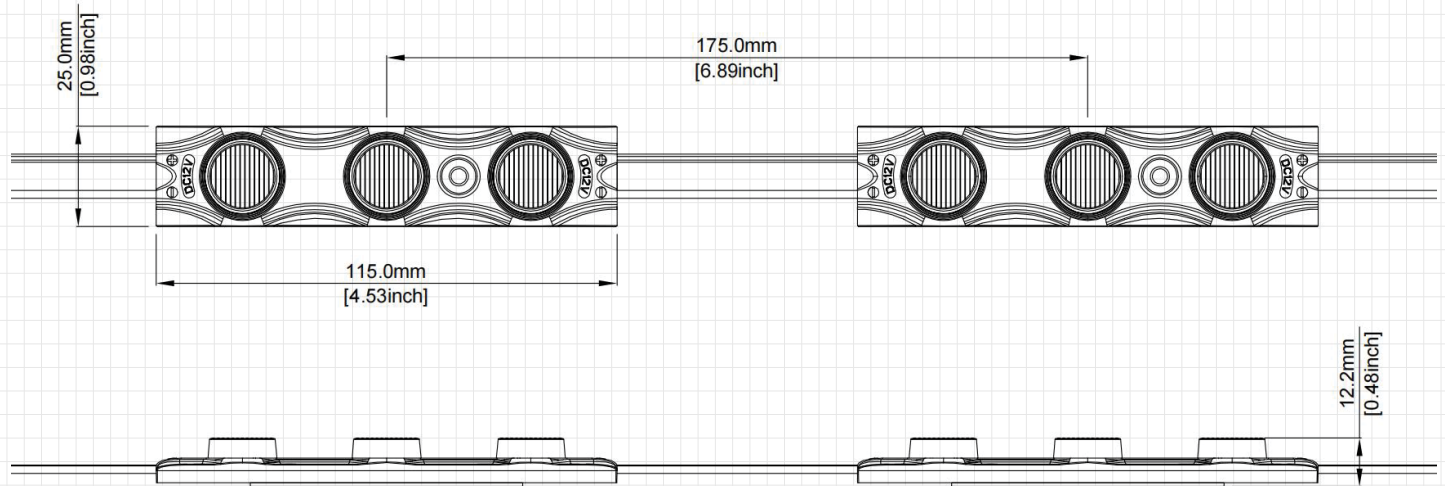
Nominal voltage	12.0V
Nominal wattage per chain	90W
Nominal wattage per LED module	3W
Input voltage range	12V±5%
Type of current	DC

LED MODULE DATA

Number of LEDs per module	3
Number of LED modules per chain	30
Minimum operable number of LED modules	1



DIMENSIONS (2D DRAWING)



PLEASE NOTE

- The power supply cable should meet the actual maximum current and power specifications
- All the end point of wires should be waterproof
- SMPS/LED driver joining point must use appropriate connector
- Pay attention to the maximum number of connections, overloading can be hazardous
- All the power supply must have the corresponding certification like BIS
- Our company reserves the right of final interpretation of all specifications and data
- The above is subject to change without notice